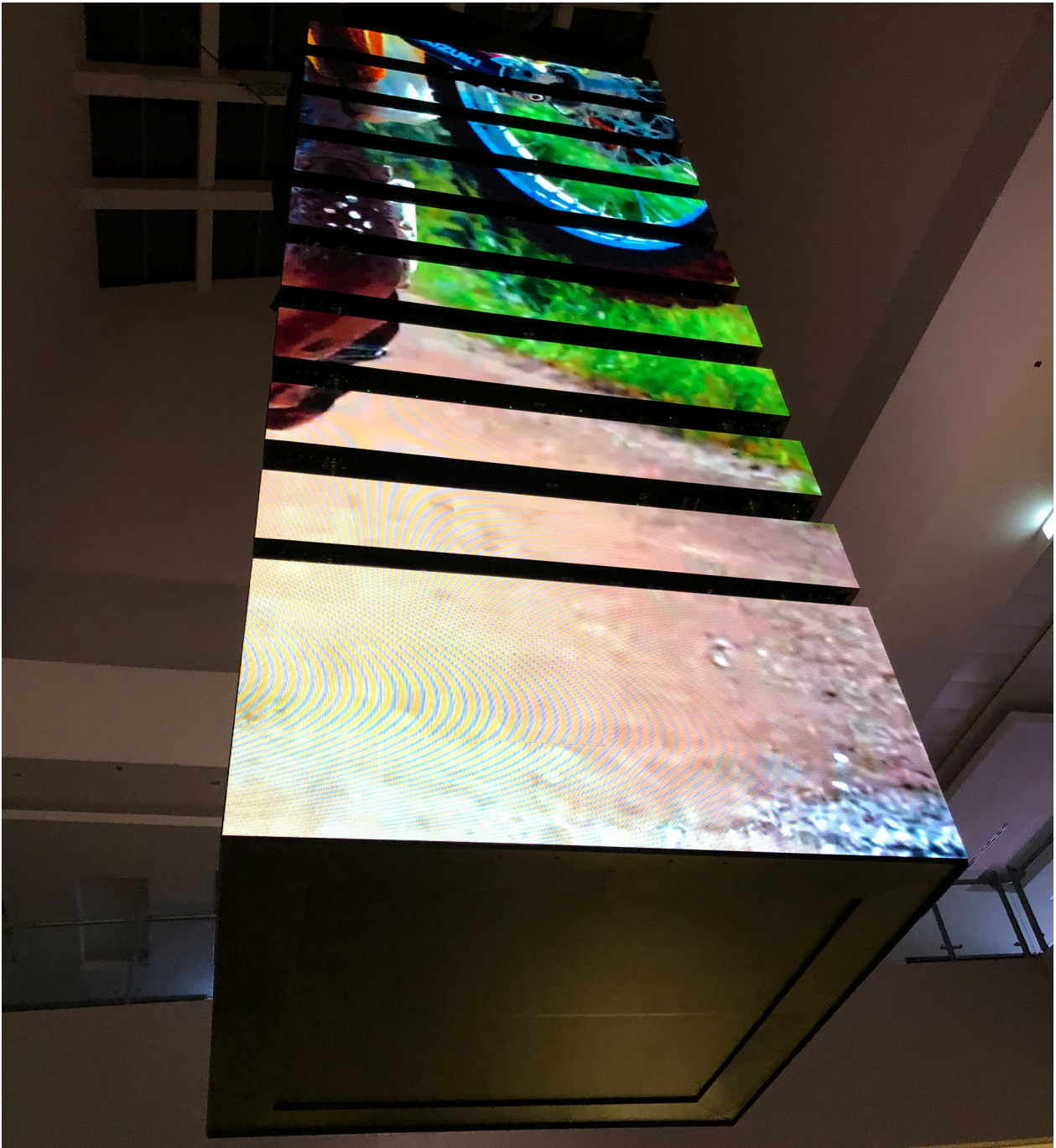


# VISION DPP-Q



LIGHTWEIGHT NANO-POLYMER PANELS  
SINGLE BIN/BATCH LEDs AND MBI DRIVER ICs.  
NEUTRIK TRUE1 CONNECTORS.  
FULLY TUV CE CERTIFIED AND PROTECTED UP TO IP65  
EASY COUPLING AT VARIABLE ANGLES

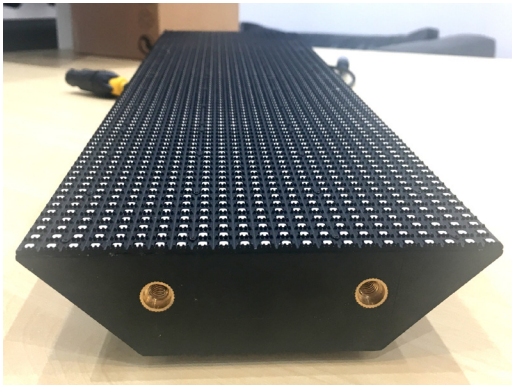
## VISION DPP-Q ACCESSORIES

### Fast rig & derig

The VISION DPP-Q mini LED display system is a fast rig/derig solution (up to 100 modules per hour), with easy, no-tool installation, making it ideal for the rental market and event application.

### Compatible with DPP

This product compliments the digiLED DPP LED system.



### Lightweight

Perfect for lightweight applications, the VISION DPP-Q LED display system weighs only 29kg/sqm.

### Variable angles

Easy, custom coupling at variable angles allowing you to create custom corners and angles.

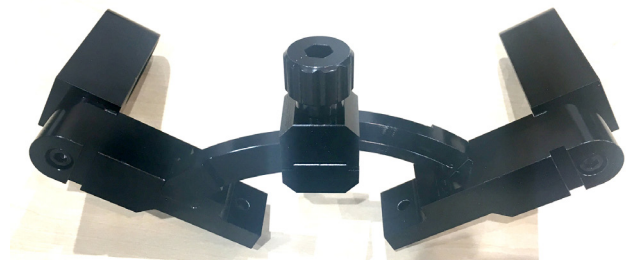
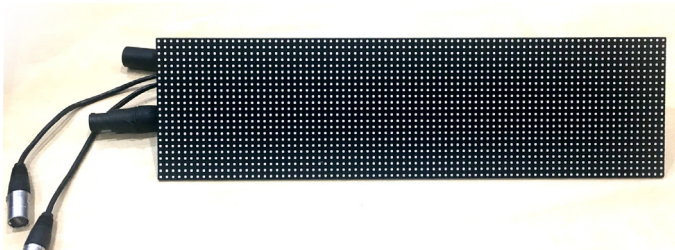


## digiLED Application Experts

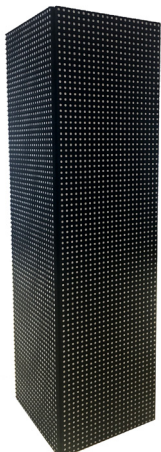
- Site surveys, install design & visuals
- Procurement / installation of screen surface & structures
- System commissioning & ongoing maintenance / warranty

### Standard system accessories

- In-built Neutrik power and data cables.



VARIABLE ANGLE COUPLER  
Note: up to 15deg concave or convex curving



NEUTRIK CONNECTORS



# VISION DPP-Q

## PRODUCT SPECIFICATIONS



|  | INDOOR   | OUTDOOR           | OUTDOOR           |
|--|--|-------------------|-------------------|
|  | DPP-Q3910  | DPP-Q4810o        | DPP-Q5950o        |
| Physical Pixel Pitch (HxV) mm                | 3.906  | 4.808             | 5.952             |
| Pixel Resolution (Width/Height) pixels/panel | 128/32   | 104/26            | 84/21             |
| Panel Dimensions (W x H x D) mm              | 500 x 125 x 56   |                   |                   |
| Standard Panel Area m <sup>2</sup>           | 0.063  |                   |                   |
| Standard Weight kg/m <sup>2</sup>            | 27   | 28.6              | 28.6              |
| Corner Option Available degrees              | Yes (90 degrees)   |                   |                   |
| Ingress Protection (Front/Rear)              | Indoor IP50/IP50   | Outdoor IP65/IP54 | Outdoor IP65/IP54 |
| Maintenance Access                           | All Front  |                   |                   |
| Standard Refresh Rate Hz                     | ≥1920  |                   |                   |
| Uncalibrated Brightness* nits                | ≥1000  | ≥4500             | ≥6000             |
| Calibrated Brightness* nits                  | N/A  | N/A               | N/A               |
| Input Voltage VAC/Hz                         | 100~250/50-60  |                   |                   |
| Max Power Consumption** W/sqm                | 480  | 680               | 680               |
| Typical Working Power Consumption** W/sqm    | 144  | 205               | 205               |
| Operating Temperature (min/max) degC         | -10/+50  | -10/+50           | -10/+50           |
| Certification                                | (CE (IEC82368-1 TBC), FCC, UL, ETL, EMC, LVD, RoHS): TBC |                   |                   |
| HDR***                                       | (see foot note)  |                   |                   |

All specifications are subject to change without prior notification. E&OE.

Specifications are for standard system configuration. Contact your digiLED expert for detailed specification.

\*The figures shown for brightness are standard guidelines figures only and based on average test laboratory conditions.

\*\* The figures shown for power consumption are standard guidelines figures only and based on average test laboratory conditions.

\*\*\*HDR: Subject to system configuration and processing.