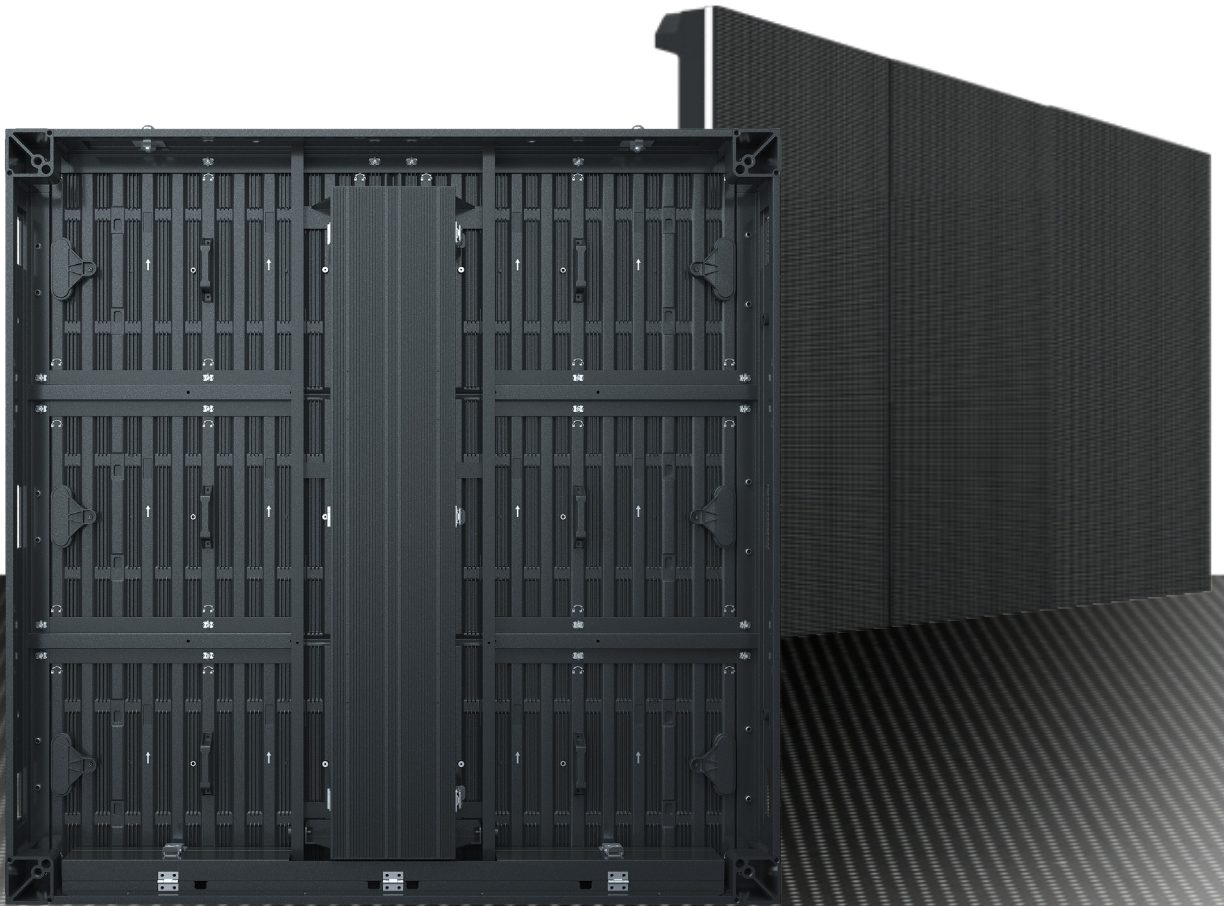




VISION ULTRA



ULTRA ROCK SOLID PERFORMER





ULTRA ROCK SOLID PERFORMER



Unrivalled High Brightness & Contrast

Exceptional brightness of up to 8500nits for the enhanced version, incredible refresh rates of up to 7680Hz and a fantastic contrast ratio, thanks to matte black masks on the fronts of panels. VISION ULTRA will bring you outstanding content playback on all your outdoor applications.



Highly Engineered

Every component of digiLED's VISION range and particularly the VISION ULTRA have been engineered to the highest tolerance, to ensure you get a perfectly seamless screen



ZEUS® included

digiLED ZEUS® is a revolutionary new way to manage the energy savings for your screen. Z in ZEUS stands for ZERO – and that's exactly how much energy your screen will consume when digiLED ZEUS® is activated.



Reliability Without Sacrificing Quality

Built to extremely high standards, VISION ULTRA will provide reliable service throughout its operational life. Quality assured.

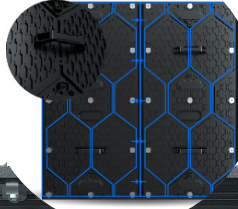


5 Year Warranty

As with all digiLED Premium products, VISION ULTRA comes with a 5 year warranty. Contact your local Service Lab via online RMA for our renowned fast turnaround.

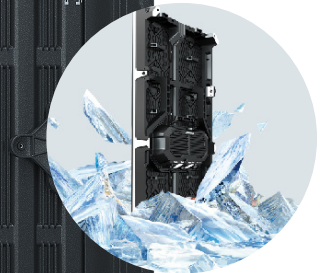
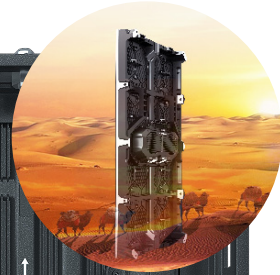


FEATURES



Large 480x320mm LED tiles for reduced failure rate due to fewer connections required

Aluminium backed LED tiles withstand up to 60degC of blistering heat

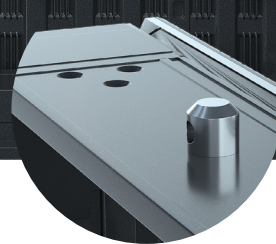
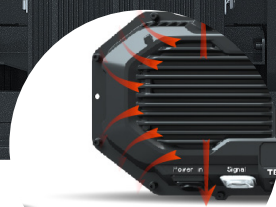


Performs in -30degC icy cold conditions

Option of LEDs with 7000 or 8500NITS calibrated brightness



Improved heat dissipation in the PDP



Panel mounting flexibility to replace older cabinets with identical mounting locations



SPECIFICATIONS

OUTDOOR	VISION ULTRA 6o	VISION ULTRA 8o	VISION ULTRA 10o	VISION ULTRA 16o
Physical Pixel Pitch (HxV) mm	6.67	8	10	16
LED Type	SMD			
LED Configuration	1R 1G 1B			
LED Size	2727	3535	3535	3535
LED Tile Size (Width/Height) mm	480/320	480/320	480/320	320/480
Pixel Resolution (Width/Height) pixels/panel	144/192	120/160	96/128	80/60
Panel Dimensions (W x H x D) mm	960 x 960 x 90	960 x 960 x 90	960 x 960 x 90	1280 x 960 x 90
Curving degrees	No			
Curving Minimum Radius mm	N/A			
Corner Option Available degrees	Yes			
Standard Panel Area m2	0.9216	0.9216	0.9216	1.2288
Standard Weight kg/m2	28	28	28	38.5
Ingress Protection (Front/Rear)	IP65/IP55			
Cabinet Material	Aluminium (AL6061)			
Maintenance Access	Front or Rear - all components			
Viewing Angle (H/V) degrees	140/100			
Standard Refresh Rate Hz	≥3840	≥3840	≥3840	≥7680
Frame Rate Hz	Static			
Contrast Ratio	4000:1			
Processing	NovaStar A5 S			
Memory On-Board	Yes			
Uncalibrated Brightness NS Gold RS2727 LEDs* nits	≥9500	-	-	-
Calibrated Brightness NS Gold RS2727 LEDs* nits	≥8000	-	-	-
Uncalibrated Brightness NS Gold FM2727 LEDs* nits	≥7000	-	-	-
Calibrated Brightness NS Gold FM2727 LEDs* nits	≥6500	-	-	-
Uncalibrated Brightness NS Copper NH2727 LEDs* nits	≥6500	-	-	-
Calibrated Brightness NS Copper NH2727 LEDs* nits	≥6000	-	-	-
Uncalibrated Brightness NS Gold RS3535WAR LEDs* nits	-	≥9500	-	-
Calibrated Brightness NS Gold RS3535WAR LEDs* nits	-	≥8000	-	-
Uncalibrated Brightness NS Gold FM3535WAM LEDs* nits	-	≥7800	-	-
Calibrated Brightness NS Gold FM3535WAM LEDs* nits	-	≥7000	-	-
Uncalibrated Brightness Sinyopto Gold 2727 LEDs* nits	-	≥9500	-	-
Calibrated Brightness Sinyopto Gold 2727 LEDs* nits	-	≥8000	-	-
Uncalibrated Brightness NS Gold RS3535MMWAR LEDs* nits	-	-	≥9500	-
Calibrated Brightness NS Gold RS3535MMWAR LEDs* nits	-	-	≥8000	-
Uncalibrated Brightness NS Gold RS3535MWAM LEDs* nits	-	-	≥7800	-
Calibrated Brightness NS Gold RS3535MWAM LEDs* nits	-	-	≥7000	-
Uncalibrated Brightness Sinyopto Gold 2727 LEDs* nits	-	-	≥9500	-
Calibrated Brightness Sinyopto Gold 2727 LEDs* nits	-	-	≥8000	-
Uncalibrated Brightness NS Gold RS3535 LEDs* nits	-	-	-	≥7800
Calibrated Brightness NS Gold RS3535 LEDs* nits	-	-	-	≥7000
Input Voltage VAC/Hz	100~240/50-60			
Max Power Consumption** W/sqm	720			
Typical Working Power Consumption** W/sqm	240			
ZEUS (Zero Energy Use System)	Available			
Operating Temperature (min/max) degC	-30/+60			
Certification	CE (IEC82368-1 TBC), FCC, ETL, (EMC, LVD, RoHS): TBC			
HDR***	(see foot note)			

All specifications are subject to change without prior notification. E&OE.

Specifications are for standard system configuration.

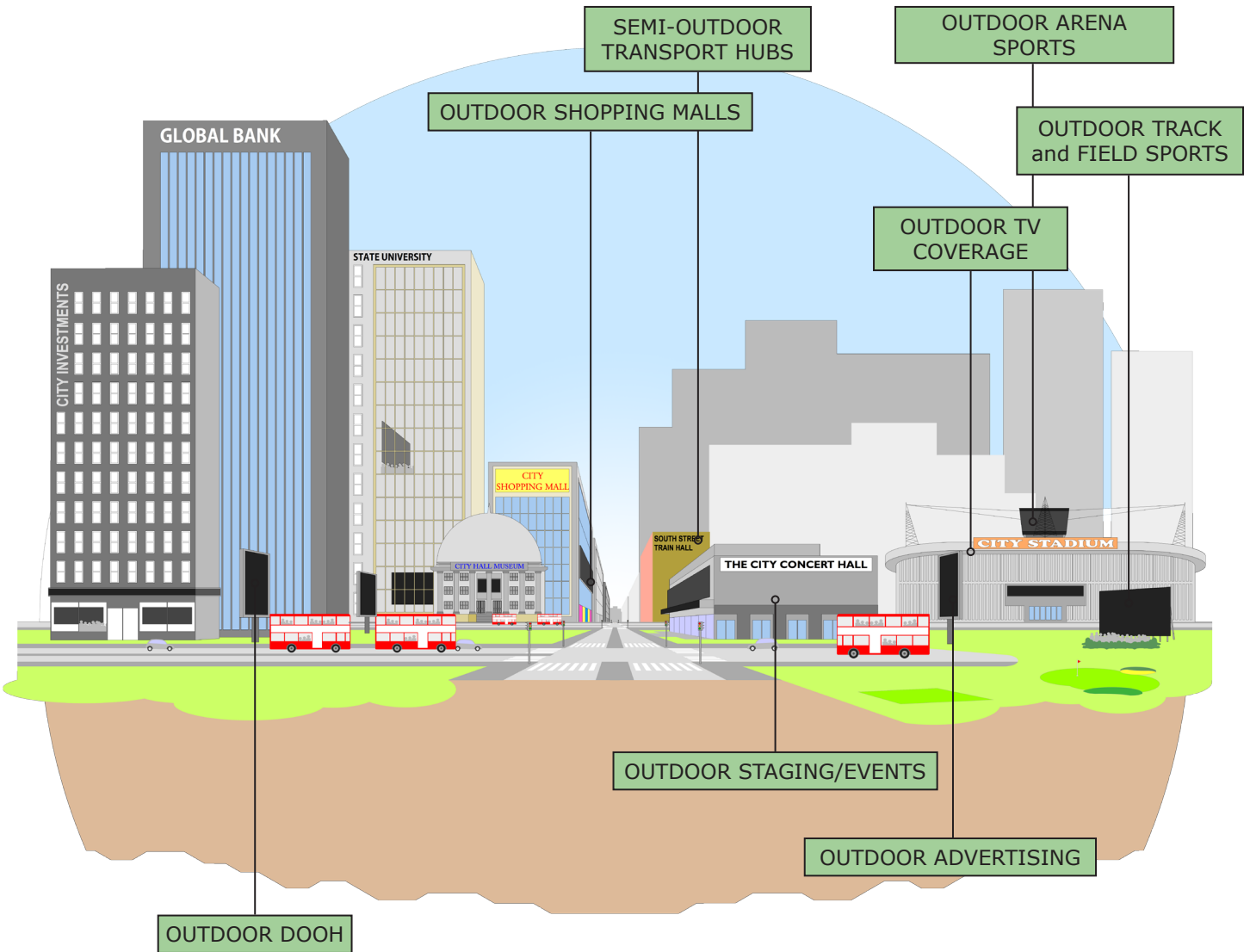
*The figures shown for brightness are standard guideline figures only and based on average test laboratory conditions.

** The figures shown for power consumption are standard guideline figures only and based on average test laboratory conditions.

***HDR: Subject to system configuration and processing.



OUTDOOR





BUILT WITH PREMIUM COMPONENTS: THE HIGHEST GRADE PARTS THROUGHOUT



BACKED BY OUR OWN HIGHLY KNOWLEDGEABLE digiLED TECH HUB QC ENGINEERS, THE INDUSTRY'S LEADING QC TEAM



COMES WITH A 5 YEAR WARRANTY: TECH HUB SERVICES LOCATED in US, UK, ASIA and SOUTH AFRICA



INCLUDES AN ENHANCED & COMPREHENSIVE SPARES PACKAGE



AN APPRECIATION FOR QUALITY



BUILT IN TRUSTED, PREMIUM PARTNERS ASSEMBLY PLANTS: MONITORED AND QUALITY CONTROLLED BY digiLED TECH HUB ENGINEERS



SUBJECT TO A COMPREHENSIVE 228 STEP QC PROGRAMME FROM POINT OF ORDER RIGHT THROUGH TO HANDOVER



FULLY CERTIFIED: CE, UKCA, FCC, CCC, ETL, RoHS, LVD, EMC



OPTION: BUILT-IN digiLED's ZEUS POWER MANAGEMENT SYSTEM AT ADDITIONAL COST

ZEUS®

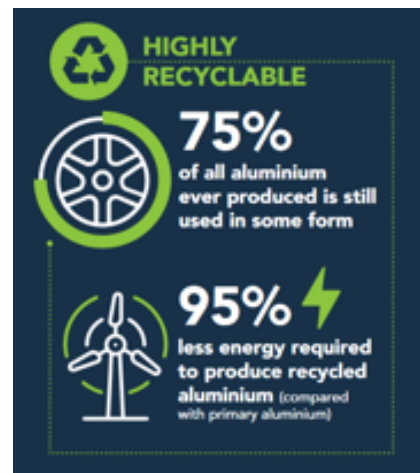
LED Screens used in commercial installations rarely operate 24/7. Venues and auditoriums don't have a permanent audience. A dirty secret of our industry is that often, when a screen is not in use, it is simply displaying a black image or video. The power is still live, using 7% to 17% of the maximum energy consumption or, looked at another way, up to 50% of the average energy usage!

Designed in the UK, digiLED's patent pending ZEUS® stands for "Zero Energy Use System". A screen set to black with digiLED ZEUS will use ZERO power. Additionally, ZEUS cards are manufactured in Liverpool and Dorking (UK). More details on ZEUS® in the dedicated ZEUS brochure.

Recyclable Material

Aluminium is used extensively in digiLED's LED tiles and the frames/chassis. As one of the most widely recycled materials on earth, this gives excellent options when considering how to dispose of an end-of-life digiLED screen.

LED tiles that are constructed out of aluminum retain a high materials value at the end of their life. These are much more likely to be shredded and metal-extracted before waste processing is considered complete.



Copper also makes up a large percentage of the product by weight - again, easily recyclable.

RoHS standards are closely monitored during production (and other international standards appropriate to the region). An example of this is the environment, chemical and processes audit of one of our production lines by Sony before they approved the use of digiLED.

228-Step Production Plan

The digiLED 228-step Production Plan helps us manage processes so we can hit schedules and plan logistics efficiently, therefore avoiding the need to revert to air freight which uses 44 times more CO₂ than a ship. The 228-Step Production Plan also ensures that digiLED makes high quality products, meaning that it will give years of reliable, trouble-free service; the best decision for the environment is not to buy on price but to buy a product that will last for years.

Shipping

Sea freight is prioritised as the shipping method from China as it uses 44 times less CO₂ than air transport delivery.

Serviceable

digiLED always briefs clients that a well-maintained screen will have a life expectancy of 10 years plus. As a company, we stand by this by offering tech support and parts for all legacy products. Currently, the oldest clients screen supported by digiLED is 14 years old and requires windows XP to operate it - but it still operates.

Our Ethos

Our goal is to do business with suppliers and customers whose company we enjoy and whose principles and values we respect.

We endeavour to be politely firm in our beliefs and steadfastly uphold our standards by doing the job correctly to produce quality products, supplied with loving care, to customers who cherish our systems and the enthusiastic, friendly expertise we strive to provide.

We love our work and are proud of our experience and our expertise. We want to do business with people who see the benefits of what we do and appreciate our input.

digiLEDers are keen to offer advice and an insight into our specialist knowledge without demanding a commercial return, if we can't convince customers of our value, we don't deserve their patronage.

Our Products

Huge, bright, vibrant, bespoke digiLED screens are designed using premium components, by seasoned LED experts, then crafted and assembled in selected specialist factories.

Assembly, production and testing is monitored by the industry's leading QC team, using a proven 228-step manufacturing QC process, paying meticulous attention to fine detail.

The resulting digiLED screens exhibit superior images, providing reliable performance throughout the 5-year warranty period and beyond. Supported locally by experienced, qualified, field and bench engineers.

digiLED quality just lasts.



CONTACT US

LONDON

UK HEAD OFFICE

The Pixel Depot, Copse Farm, Moorhurst Lane, Beare Green, Surrey RH5 4LJ UK

tel: +44 20 7381 7840 e-mail: info@digiLED.com

 [Sales](#)  [Admin](#)  [Pixel Depot](#)  [Tech Hub](#)  [Service Lab](#)

LAS VEGAS

The Pixel Depot, 365 Pilot Road, Suite A, Las Vegas, Nevada, 89119, USA

tel: +44 20 7381 7840 e-mail: info@digiLED.com

 [Sales](#)  [Admin](#)  [Pixel Depot](#)  [Tech Hub](#)  [Service Lab](#)

DALLAS

digiLED Service Lab, 8291 Gateway Dr, Argyle, TX 76226, USA

 [Service Lab](#)

SHENZHEN

SHENZHEN DIGI TECHNOLOGY CO. LTD,

The Pixel Depot, Room 1807, Haohai Junyue Bldg, 2092 Shenyan Road, Hai Shan Street, Yantian District, Shenzhen 518000, China

 [Tech Hub](#)  [Logistics](#)  [Service Lab](#)

SALES OFFICES IN MILAN, THE HAGUE, NANTES AND TOKYO

TALK TO US AND BE SOCIAL

+44 20 7381 7840 info@digiLED.com www.digiLED.com

 [digiLED_](#)  [digiLEDscreens](#)  [digiLEDscreens](#)  [digiLED_](#)