

digiFLEX L



INDOOR HD FLEXIBLE SCREEN SYSTEM
...PERFORMANCE AT ITS BEST
SUPER FLEXIBLE
CREATIVE
VIVID COLOUR AND FANTASTIC BLACKS
ASTONISHING VIEWING ANGLES.

digiFLEX L FEATURES

Curveable

digiFLEX L has a plastic and resin based construction with flexible rib sections allowing it to curve in one axis/plane for convex and concave curving situations. Minimum diameter is 637mm.

Lightweight

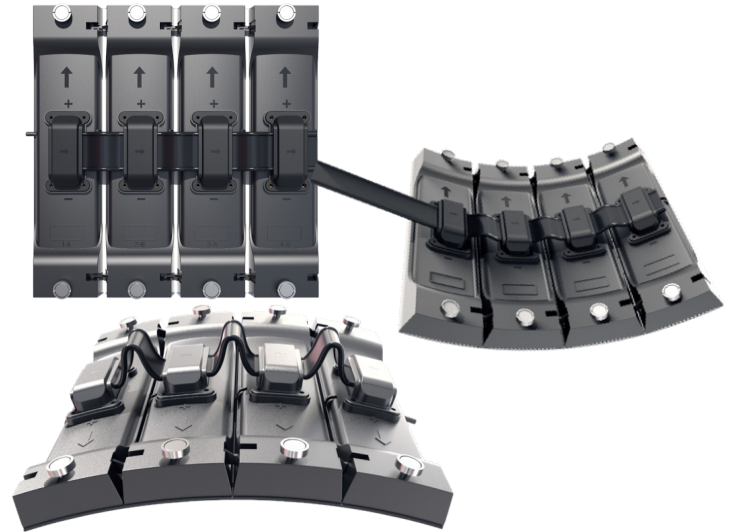
At under 1.2kgs per tile it is light enough to fix to most surfaces for many creative applications.

Cable free

For a sleek look that compliments the superb visual performance of the LEDs, the whole screen is clutter free. Tile to tile connection is made on the rear.

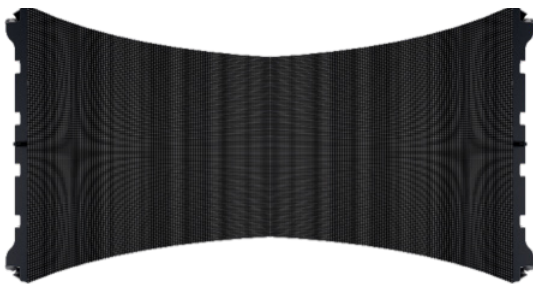
Magnetic feet

Provided the surface you are fixing to has magnetic properties, digiFLEX L easily attaches on concave and convex surfaces making it a breeze to create a seamless curved screen.



Tile thickness is 32mm including the magnetic feet and a single tile weighs a mere 1.2kgs including connector cable.

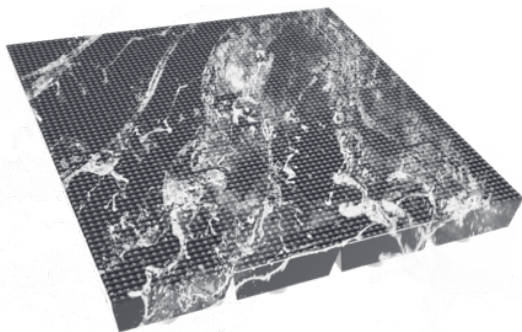
digiFLEX L is a limitless creative solution for all your ingenious applications. Magnetic fixings makes rigging a doddle and if you need to swap tiles this is done in only a few seconds. Manufactured to high tolerances to create super smooth hi-res displays. Available in tile only or cabinet form.



A single tile can form a 45deg inner and outer (concave or convex) arc



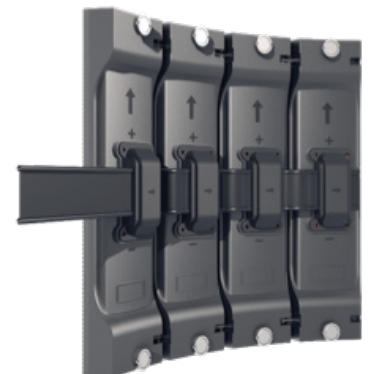
8 tiles can form either a concave or convex circle with a minimum diameter of 637mm



The module IP rating is IP67
Excellent waterproof and dust-proof integrity, ensuring superb performance.



Independent control box, more secure and stable.
A single control box only weighs 2.27kgs



Each control box can load 6 modules;
- Protection level is IP65



FRONT MAINTENANCE

Bow shaped maintenance tool for removing tiles mid screen.



digiLED Application Experts

- Site surveys, install design & visuals
- Procurement / installation of screen surface & structures
- System commissioning & ongoing maintenance / warranty

The minimum pixel pitch is 3.2mm - a new era of outdoor high-definition flexible tile screen system.



digiFLEX L

PRODUCT SPECIFICATIONS



	digiFLEX L TILE ONLY VERSION		digiFLEX L CABINET ONLY VERSION	
	L3200	L4000	L3200C	L4000C
Physical Pixel Pitch (HxV) mm	3.200	4.000	3.200	4.000
Pixel Resolution (Width/Height) pixels/tile	100/80	80/64	-	-
Pixel Resolution (Width/Height) pixels/panel	-	-	200/80	160/64
Standard Tile Dimensions (W x H x D) mm	320 x 256 x 28.8		-	
Standard Panel Dimensions (W x H x D) mm	-	-	640 x 256 x 100	
Standard Tile Area m2	0.082		-	-
Standard Panel Area m2	-		0.164	
Standard Tile Weight kg/m2	0.9	0.85	-	
Standard Panel Weight kg/m2	-		5.73	
Ingress Protection (Front/Rear)	IP40/IP20		IP40/IP20	
Maintenance Access	Full Front		Full Front	
Standard Refresh Rate Hz	≥2880		≥2880	
Uncalibrated Brightness* nits	≥900		≥900	
Calibrated Brightness* nits	≥750		≥750	
Input Voltage VAC/Hz	100~240		100~240	
Max Power Consumption** W/sqm	625	488	625	488
Typical Working Power Consumption** W/sqm	188	146	187	146
Operating Temperature (min/max) degC	0/+40		0/+40	
Certification	CE, FCC, ETL		CE, FCC, ETL	CE, FCC

All specifications are subject to change without prior notification. E&OE.

Specifications are for standard system configuration. Contact your digiLED expert for detailed specification.

*The figures shown for brightness are standard guidelines figures only and based on average test laboratory conditions.

** The figures shown for power consumption are standard guidelines figures only and based on average test laboratory conditions.