

digiTHIN XS HD

COST-EFFECTIVE INDOOR LARGE LED SCREEN SOLUTION



HD Panel Sizes

The digiTHIN XS HD has been designed with true HD, 2K, 4K and beyond, so no need to worry about making sure your HD image will fit. No letterboxing - no wasted pixels.

Installation can comprise of mix and match panel sizes which gives you a greater flexibility and creative answers to your screen layout.

Choose from: 1000x562.5mm, 500x562.5mm or 250x562.5mm



Super Slim

The overall panel depth is a mere 28mm and the panels are super lightweight at under 21kg/m². With magnetic LED tiles that fit the chassis fixing points, the user friendly design allows fast and efficient maintenance and the quick replacement of internal components.



Mix & Match

When it comes to designing a bespoke screen layout, any combination of panels can be used in the same array.

Perfect Flatness

The cabinets are constructed from die cast aluminium for built in lightness and strength, coupled with true flatness and consistency of screen surface.

Frameless Installation

The digiTHIN XS HD has the ability to be mounted directly to the wall, allowing your installation to be completely frameless.

Cool Running

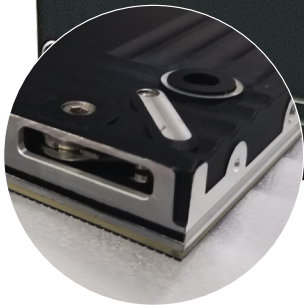
Convenient for maintenance. Superb heat dissipation adding to efficient power consumption.

FEATURES

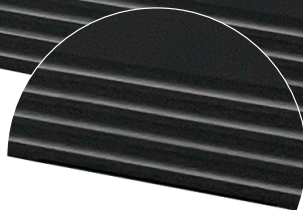
Cabinets are available for true seamless corner to corner mitering



Foil openings in the rear, top, bottom and sides for convenient, discreet cable pass throughs



Die cast aluminium cabinets for built-in lightness and strength and true flatness of the screen surface



All cabling is hidden within the cabinet and all accessible from the front

SPECIFICATIONS

INDOOR		digiTHIN XS HD1560	digiTHIN XS HD1950	digiTHIN XS HD2600
Physical Pixel Pitch (HxV) mm		1.563	1.953	2.604
Pixel Resolution (Width/Height)	pixels/panel	640/360	512/288	384/216
Panel Dimensions	(W x H x D) mm	1000 x 562.5 x 28		
Optional Panel Sizes	(W x H) x D mm	500 x 562.5, 250 x 562.5 x 28		
Option To Rotate Panel		No		
Corner Option Available	degrees	Yes 90 degrees		
Curving Radius Minimum	mm	1000		
Standard Panel Area	m ²	0.5625		
Standard Weight	kg/m ²	20.8		
Ingress Protection	(Front/Rear)	Indoor IP20/IP20		
Maintenance Access		All Front		
Standard Refresh Rate	Hz	≥3840		
Uncalibrated Brightness*	nits	≥600	≥900	900 - 1000
Calibrated Brightness*	nits	≥550	≥800	800 - 900
Input Voltage	VAC/Hz	100-250/50-60		
Max Power Consumption**	W/sqm	500	400	410
Typical Working Power Consumption**	W/sqm	150	120	123
Operating Temperature (min/max)	degC	-20/+40		
Certification		CE (IEC82368-1 TBC), FCC, UL, ETL, EMC, LVD, RoHS		
HDR***		(see foot note)		

All specifications are subject to change without prior notification. E&OE.

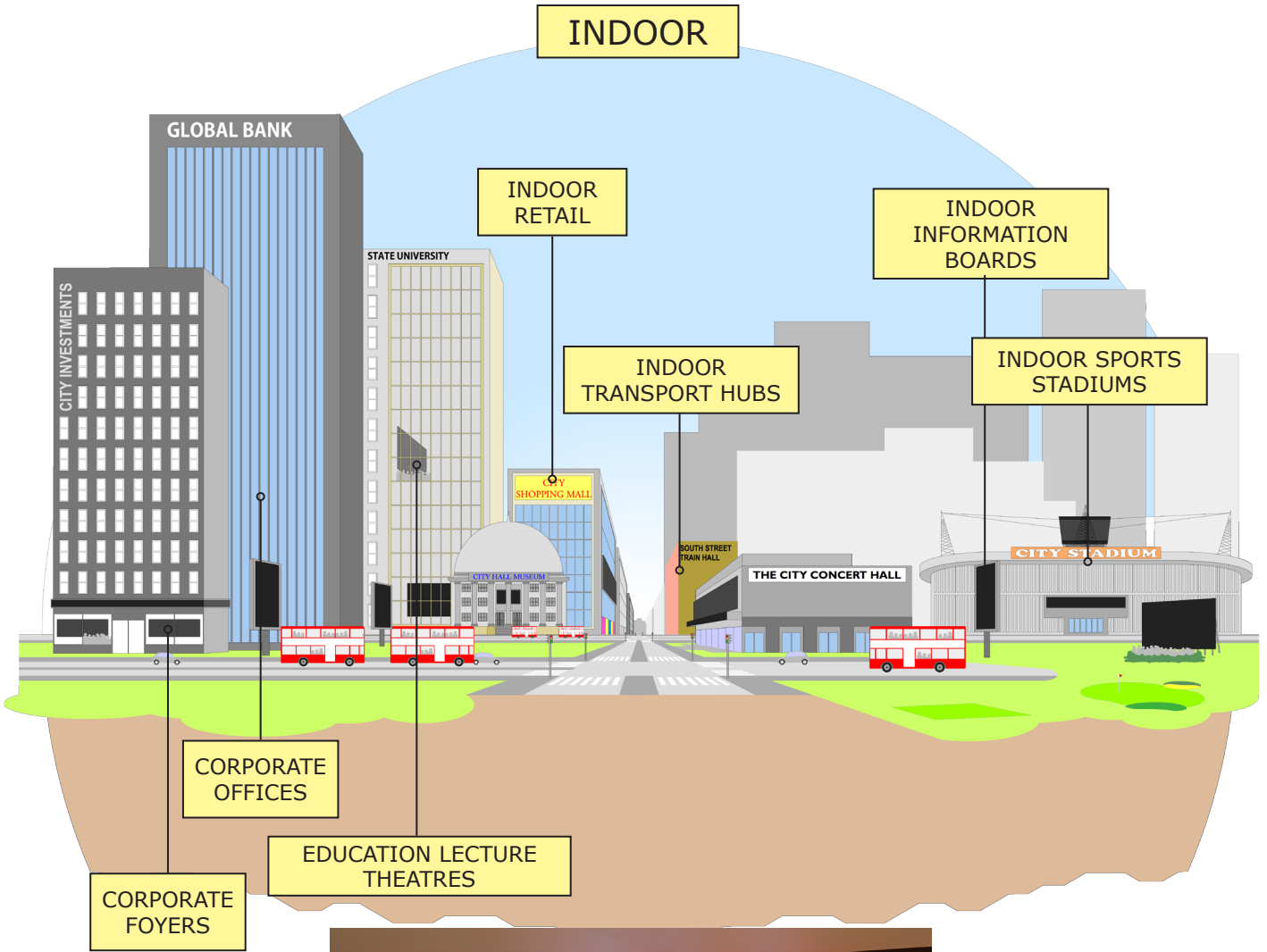
Specifications are for standard system configuration. Contact your digiLED expert for detailed specification.

*The figures shown for brightness are standard guideline figures only and based on average test laboratory conditions.

** The figures shown for power consumption are standard guideline figures only and based on average test laboratory conditions.

***HDR: Subject to system configuration and processing.

APPLICATION EXAMPLES



Our Ethos

Our goal is to do business with suppliers and customers whose company we enjoy and whose principles and values we respect.

We endeavour to be politely firm in our beliefs and steadfastly uphold our standards by doing the job correctly to produce quality products, supplied with loving care, to customers who cherish our systems and the enthusiastic, friendly expertise we strive to provide.

We love our work and are proud of our experience and our expertise. We want to do business with people who see the benefits of what we do and appreciate our input.

digiLEDers are keen to offer advice and an insight into our specialist knowledge without demanding a commercial return, if we can't convince customers of our value, we don't deserve their patronage.

Our Products

Huge, bright, vibrant, bespoke, digiLED screens are designed by seasoned LED experts, then crafted and assembled in selected, specialist factories.

Assembly, production and testing is monitored by the industry's leading QC team, using a proven 228-step manufacturing QC process paying meticulous attention to fine detail.

The resulting digiLED screens exhibit superior images, provide reliable performance and extended life. Supported locally by experienced, qualified, field and bench engineers. **digiLED quality just lasts.**

CONTACT US

LONDON

UK HEAD OFFICE

The Pixel Depot, Copse Farm, Moorhurst Lane, Beare Green, Surrey RH5 4LJ UK

tel: +44 20 7381 7840 e-mail: info@digiLED.com

 [Sales](#)  [Admin](#)  [Pixel Depot](#)  [Tech Hub](#)  [Service Lab](#)

LAS VEGAS

The Pixel Depot, 365 Pilot Road, Suite A, Las Vegas, Nevada, 89119, USA

tel: +44 20 7381 7840 e-mail: info@digiLED.com

 [Sales](#)  [Admin](#)  [Pixel Depot](#)  [Tech Hub](#)  [Service Lab](#)

DALLAS

digiLED Service Lab, 8291 Gateway Dr, Argyle, TX 76226, USA

 [Service Lab](#)

SHENZHEN

SHENZHEN DIGI TECHNOLOGY CO. LTD,

The Pixel Depot, Room 1807, Haohai Junyue Bldg, 2092 Shenyan Road, Hai Shan Street, Yantian District, Shenzhen 518000, China

 [Tech Hub](#)  [Logistics](#)  [Service Lab](#)

SALES OFFICES IN MILAN, THE HAGUE, NANTES AND TOKYO

TALK TO US AND BE SOCIAL

+44 20 7381 7840 info@digiLED.com www.digiLED.com

 [digiLED_](#)  [digiLEDscreens](#)  [digiLEDscreens](#)  [digiLED_](#)